



# Heart of Furnace



# Prolific Engineering & Services Co., Ltd (PES) History

On December 12, 2012; Prolific Group expanded into 2 companies, in which **Prolific Engineering & Service Co., Ltd. (PES)** becomes the addition to the **Prolific Heating International Co., Ltd. (PHI)** in order to fully serve ever increasing customers. **PHI** focuses on design, manufacture, trading and servicing of heater and heating related equipment, while **PES** focuses on design & manufacture, repairing/servicing of furnaces and other related services. As a result, Prolific Group has comprehensive products and services for extensive heating and furnace industries.

## Prolific Heating International (PHI)

*“Our Heat is your Improvement”*

- Established on : July 20, 2005
- Line of Business :
  - ✓ Trading
  - ✓ Design
  - ✓ Manufacturing Heating System
  - ✓ Brand Agency

## Prolific Engineering and Services (PES)

*“Heart of Furnace”*

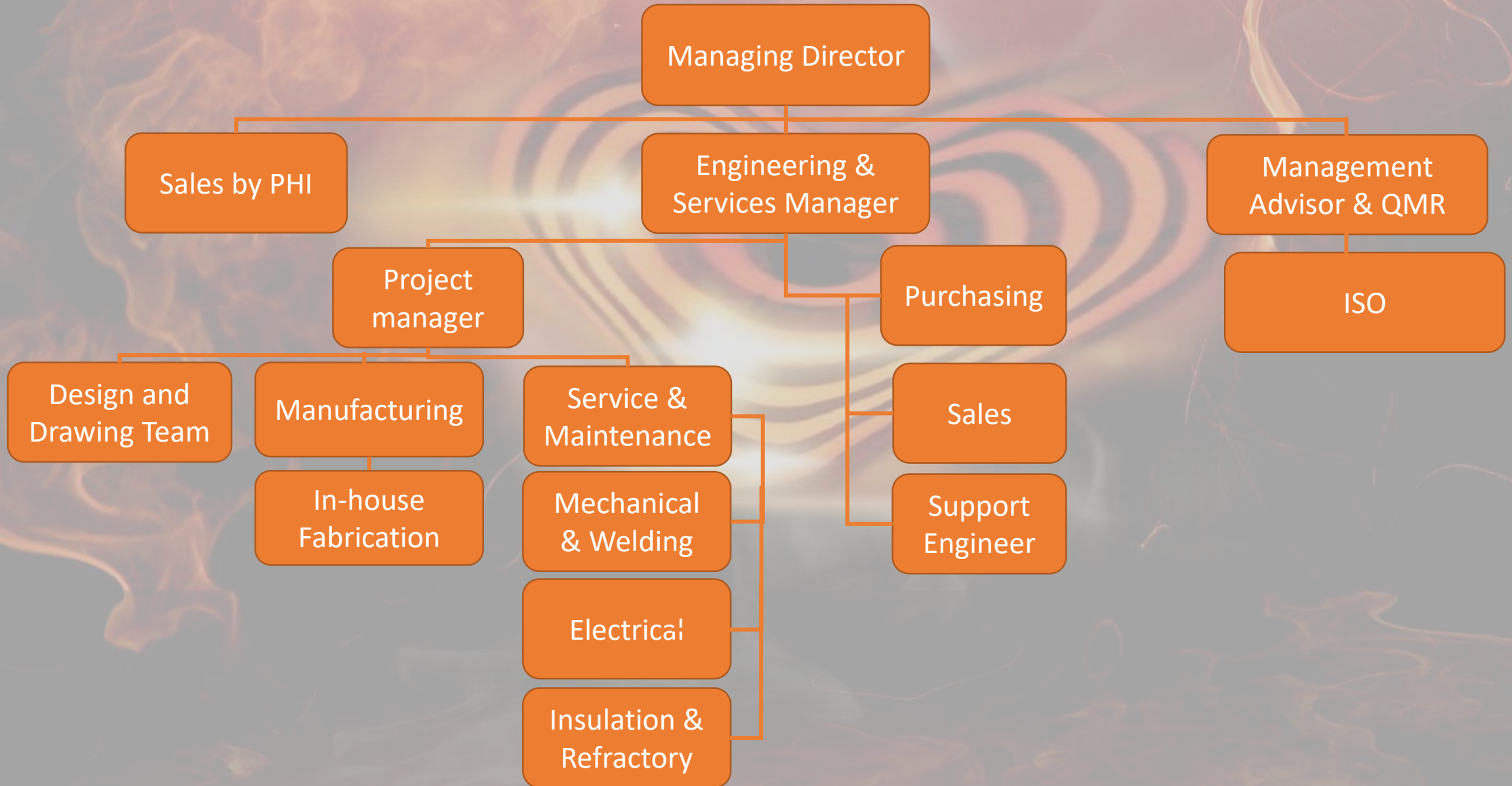
- Established on : December 12, 2012
- Line of Business :
  - ✓ Design & Manufacturing
  - ✓ Repairing & Preventive Maintenance
  - ✓ OEM
  - ✓ Other Services
  - ✓ After services (IPSEN & GasDen Ro)



Samutprakarn, Thailand



# Organization Chart of PES



# Management Philosophy



**ETHICS** - Conducting Business with integrity, ethics and fairness to customers, partners and employees.



**RESPONSIBILITY** – We take great responsibility towards customers, suppliers and employees in what we offer to provide



**PROFESSIONAL** – We built the best from our expertise including knowledge, skill and experience



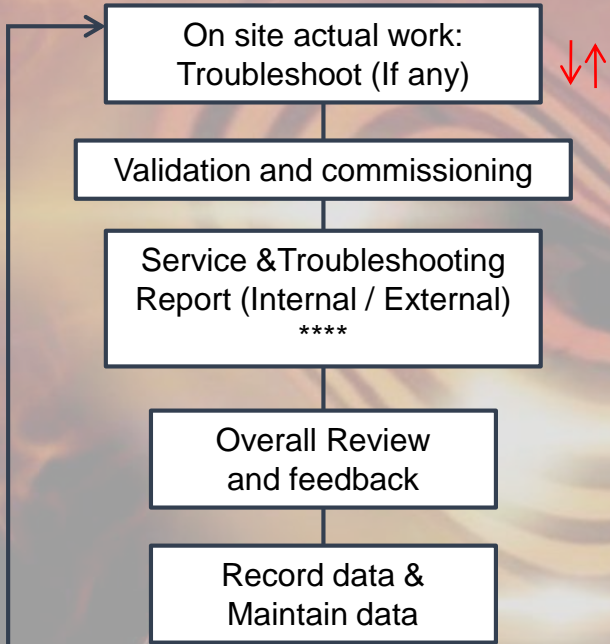
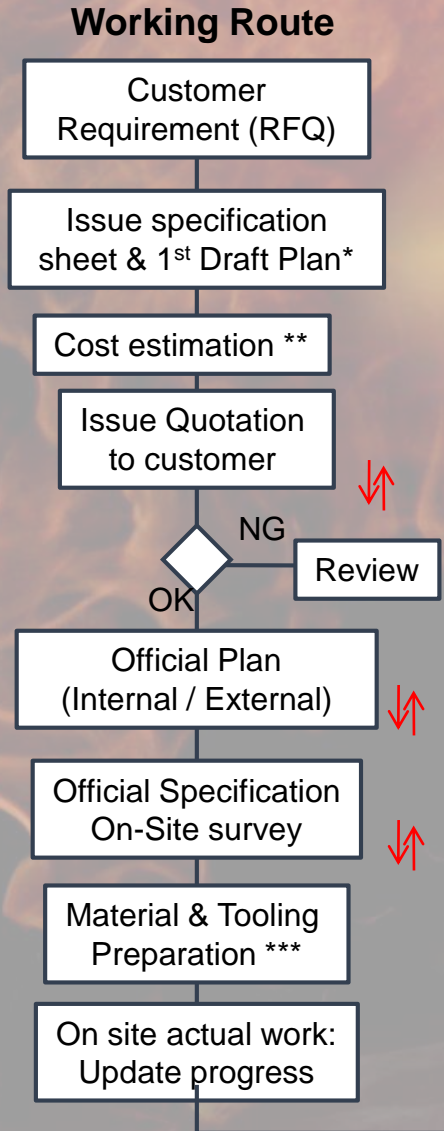
**QUALITY** – Quality products and services created from experienced design, quality composition and creative skills.



**EFFECTIVE & EFFICIENT** – We focus on the ability to achieve the optimum desired result while applying the best resources efficient and effectively.

# Service Engineering Work Flow & Improvement Items

**Way of Thinking:** QCDS systematic improvement & Knowledge management.



**Improvement Item & KPI Item**

- Quality**
  - Reliable of service
  - Increasing onsite Quality
- Problem**
  - Working Standard
  - Human Development
- Delivery**
  - Reduce L/T RFQ
  - Reduce onsite delay problem
  - On time service
- Engineering**
  - New Technology
  - Knowledge management
- Cost Structure (To clarify & C/D)**
  - Labor cost
  - Utility cost
  - Tooling cost
  - Direct material Cost
- Safety**
  - Zero Accident
  - Near miss sharing
  - Dangerous work assessment

- Item :**
- 1.Reduce LT for RQF
  2. Cost Estimation same actual
  - 3.Carify all of cost structure & Merits
  - 4.Planing work job as same actual
  - 5.Reduce unclear job by using specification sheet

**How to :**  
 Knowledge management by using data base systems & mobile app

- Self Development road map**
- Resource & Manpower plan**
- Knowledge Management**
- Technology & Skill Road Map**

# RANGE OF SERVICES



Repair &  
Preventive  
Maintenance  
(Overhaul,  
installations, etc.)

Manufacturing  
(in-House and  
other furnace)

OEM (Original  
Equipment  
Manufacturing)

After Service  
(IPSEN, Tokyo  
Gasden Ro,  
Katsura Seiki)

Retrofit  
(Prothermal  
Business  
Solution)

Other Services

# REPAIRING & PREVENTIVE MAINTENANCE

**PES** provides comprehensive solution to enhance the production process in order to reach efficiency & effectivity. Our system design are customized design, engineered to fit your operation and manufactured exclusively by PES. We also provide installation and complete engineering services. Our services in repairing & preventive maintenance consist of:

- ❖ Cleaning, Adjustment, Installation, Overhaul of Burner / Heater, Insulation & Refractory (Other products related to furnace & heating equipment)
- ❖ Maintenance Service (Yearly, Monthly, Scheduled, or On Demand)
- ❖ Reform / Advancement of Customer Demands/ Measuring/ Calibration/ Temp. Uniformity
- ❖ Cleaning the brazing furnace, melting & holding furnace, vacuum furnace, annealing furnace, etc.
- ❖ Leak Test of Gas and Air
- ❖ Magnetic Force test solenoid valve
- ❖ **Emergency On-Site Repairs & Routine Maintenance**

# Repairing & Preventive Maintenance

Replacement &  
Installation of  
Radiant Heater



Replacement Rollers & Chain



# Repairing & Preventive Maintenance

Checking of  
Radiant Heater



Repairation of  
Gas Generator

# Repairing & Preventive Maintenance

Reparation of Muffles



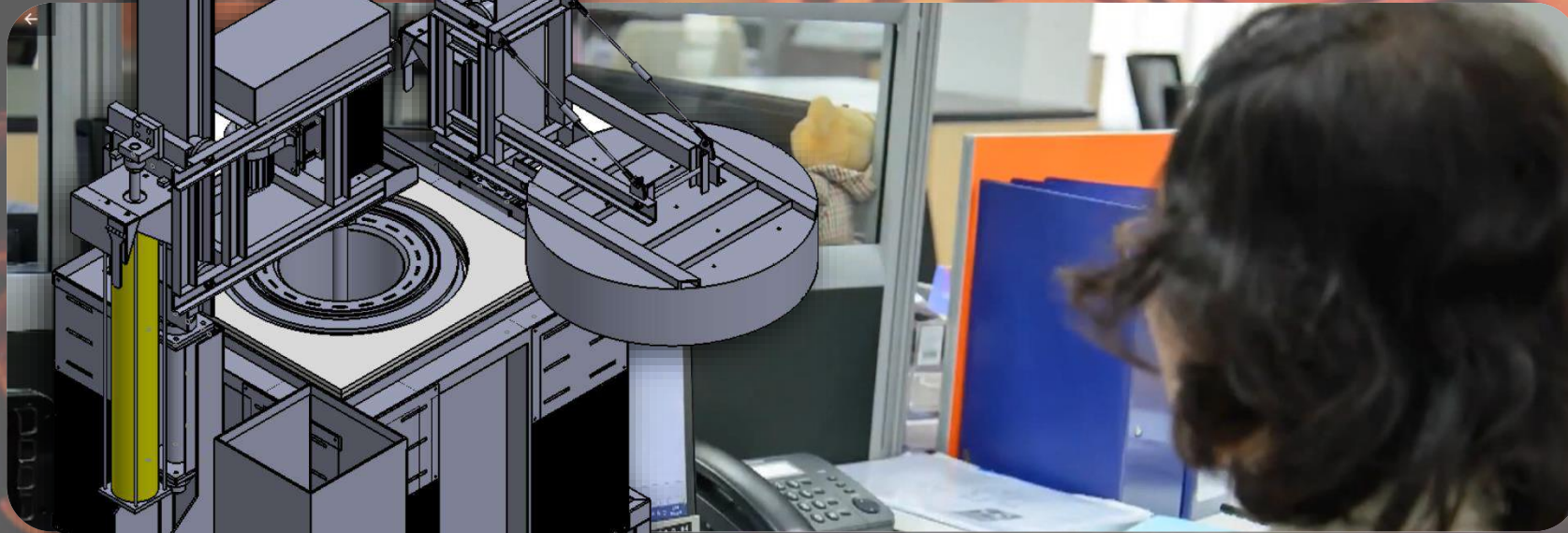
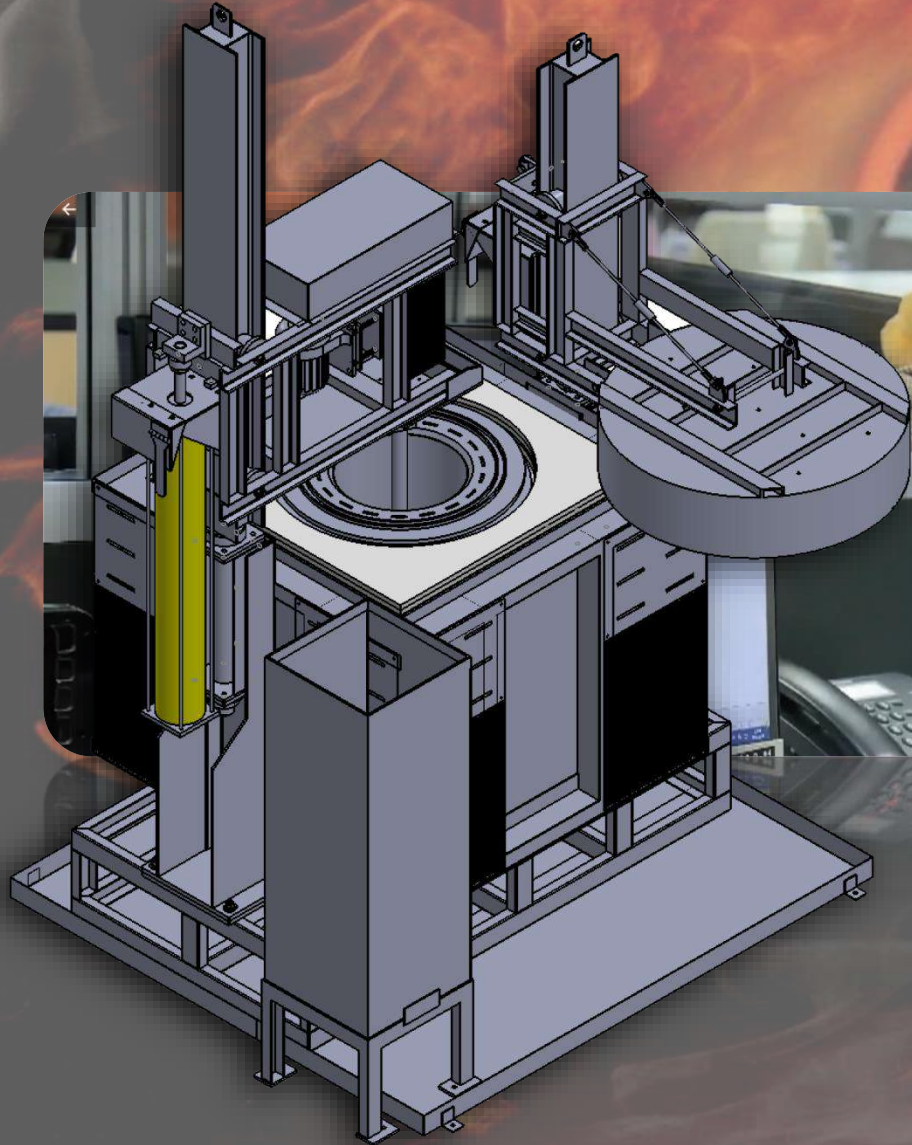
Installation of Mesh Belt

# Repairing & Preventive Maintenance

## Overhaul Quenching & Tempering Furnace



# Product & Furnace Design



## ➤ Customized Design Furnace

- Tempering Furnace
- Baking Furnace
- Homogenized Furnace
- Melting and Holding Furnace
- Dry Off Furnace
- Aging Furnace
- Annealing Furnace
- Quenching Furnace
- Curing Oven
- Pre-Heat Mold Furnace

## ➤ Customized Design Equipment

- Muffle
- Cooling Water Jacket
- Shell and Tube Heat Exchanger
- Circulation Fan
- Roller & Conveyor System
- Stainless Steel Curtain
- Hot Water Tank
- Retort

# Manufacturing



Twin Chamber Baking Furnace



Quenching Furnace



Full Line of In-House Heat Treatment

# Manufacturing



Pusher / Roller Type Tempering Furnace



Annealing Furnace





# Manufacturing



TD Coating Furnace



Mesh Belt Normalizing Furnace



# Manufacturing



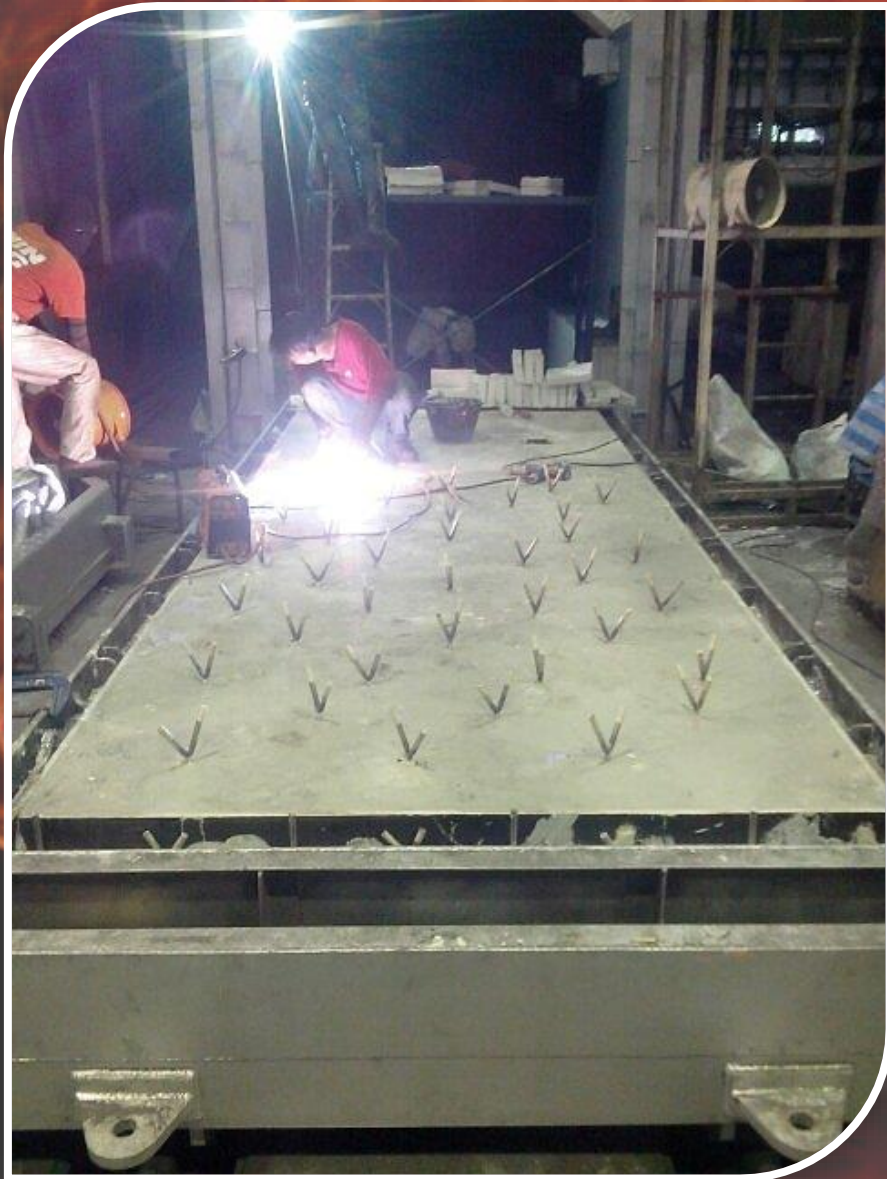
Aluminum Holding Furnace  
Capacity 300 Kg/hour



Dry Off Furnace/Mesh Belt Type  
Maximum Temperature of 350 C



**Gas Generator & Piping System**



OEM



# OEM



Continuous conveyor oven for auto plastic parts



Continuous direct hot-air / far-infrared oven for painted engine parts



Continuous jet-nozzle hot-air oven for preheating building materials

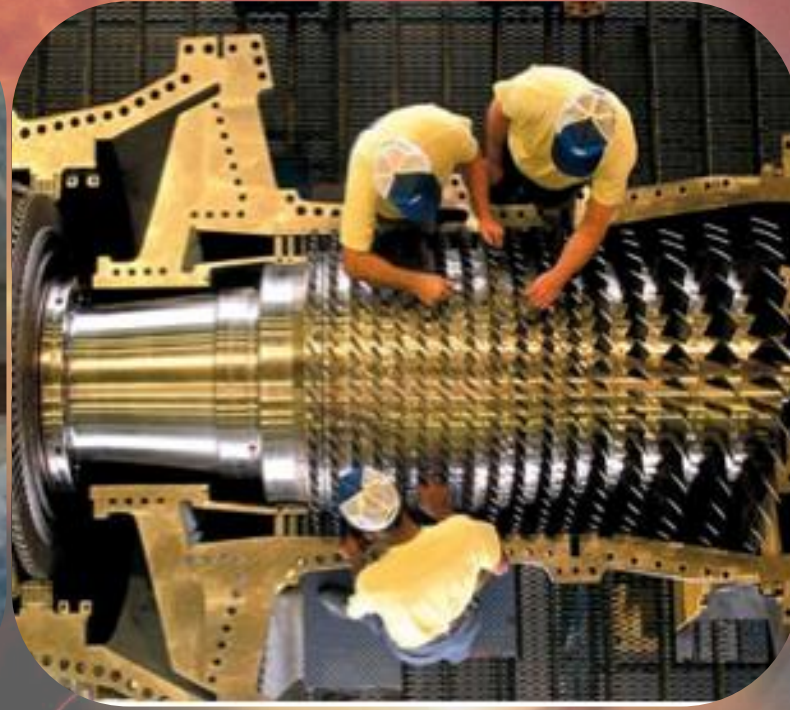
# After Sales Services – GasDen Ro

Check, Change & Repair of  
Heater





# After Sales Services – IPSEN



Retrofit for Nadcap Aerospace Standard

# After Sales Services – IPSEN

## WHAT SET A SIDE PES FROM THE REST?



### Reduces Chances of Breakdowns

Our Support Team is here to help keep your equipment running at peak performance. We know that minimizing downtime is critical. We will help you find the solution you need in order to get your furnace running as soon as possible and to minimize downtime through upgrades, parts, maintenance, repair, and service.



### Knowledgeable Technicians

Our knowledgeable technicians can diagnose and fix any problem that you might have. Our team of highly experienced can provide technical advice and support or can service or repair your products. So if there's anything you don't understand about furnace repair, or you want tips for future repair you can always ask our technicians.



### Cooperation (IPSEN & PES)

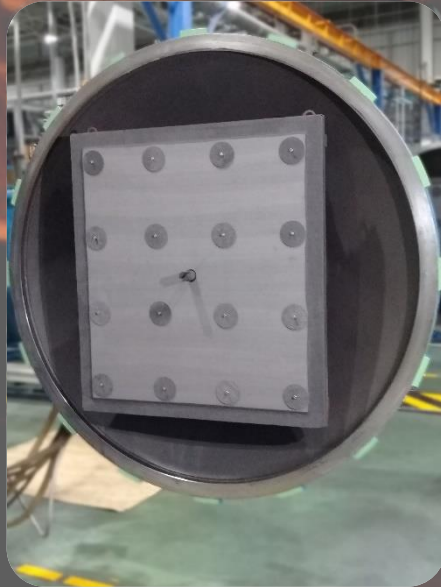
We offer the same high-quality workmanship and long-term results on every job we take on. If you're looking for furnace repair, there's one thing that you'll be looking for above everything else: not a quick fix, but a thorough and lasting fix. With the cooperation of PES & IPSEN team, we supply solution from the perspective of furnace maker as well as experts in after sales service.



### Spare and Replacement Parts Available

Prolific Group supplies its customers with quality replacement and genuine parts provided by IPSEN for your furnace. We keep a large inventory of these parts on-hand to minimize downtime and ensure efficiency. Our team stay ahead of the changes in the industry and get your furnace done right every time.

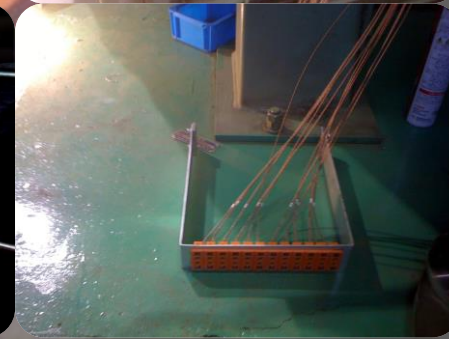
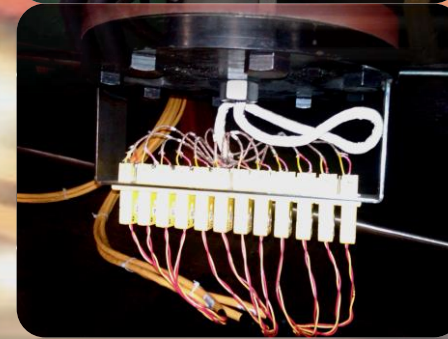
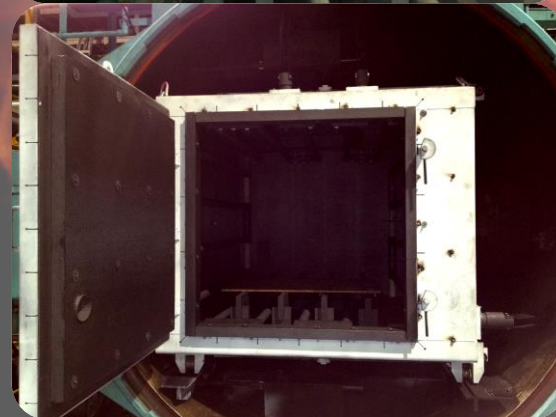
# After Sales Services – IPSEN



Helium leak testing and repair  
insulation in vacuum furnace

Repair insulation and heater of vacuum furnace

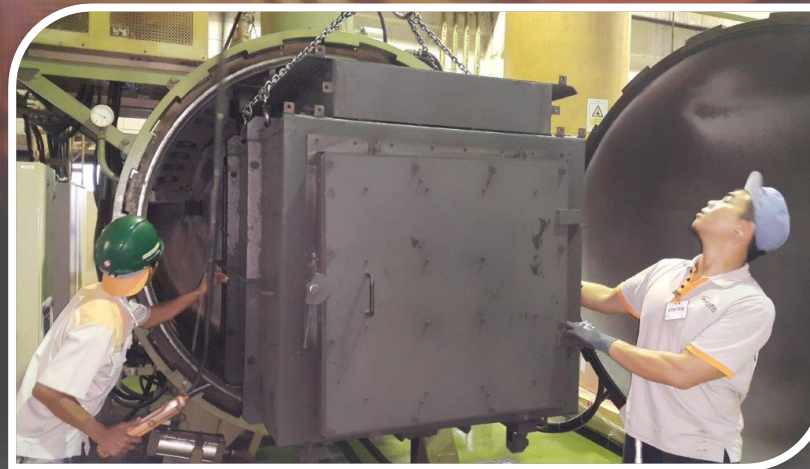
# After Sales Services – IPSEN



Add 12 T/C port for Temperature Uniformity Survey

Overhaul – hot zone replacement

# After Sales Services – IPSEN



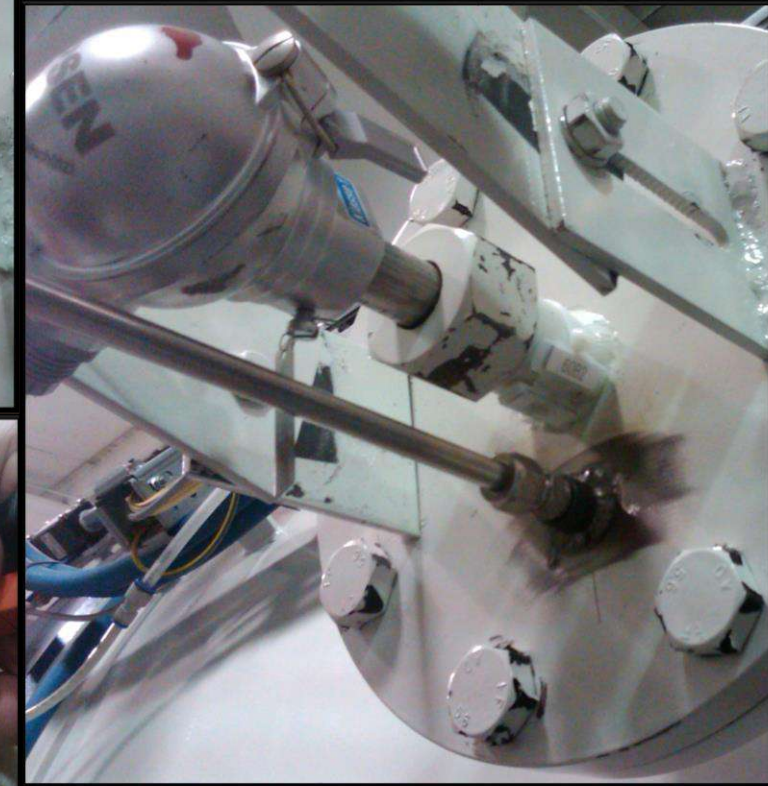
Insulation Overhaul – Vacuum Furnace



Cleaning up cooling water line

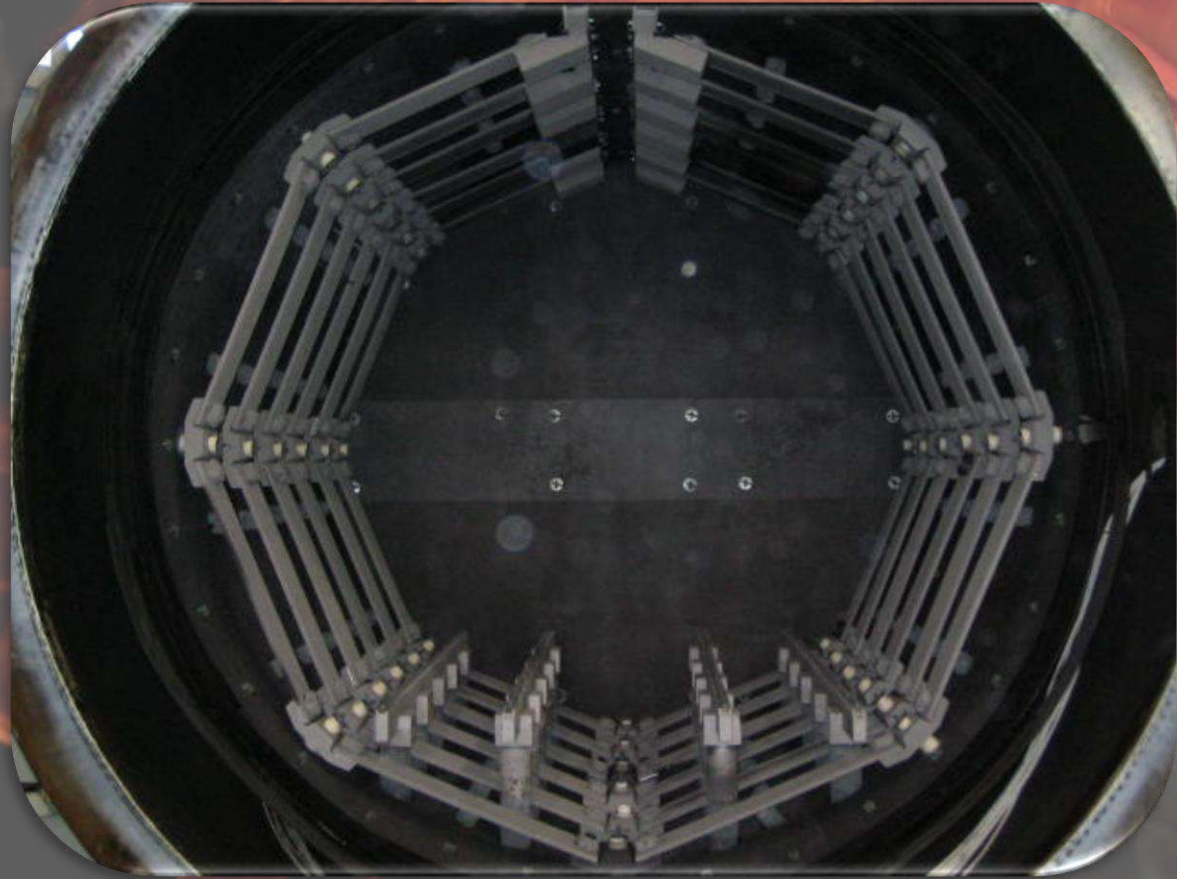
# After Sales Services – IPSEN

## Upgrade Control Cabinet



Add T/C for SAT accordingly with AMS2750E

# After Sales Services – IPSEN



Overhaul – round hot zone insulation

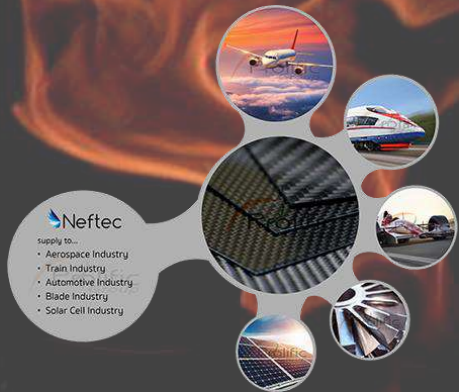


Vacuum furnace spare parts

# Aerospace and Aviation Industry



As the airline industry has grown exponentially due to escalating global travel demand that has caused the shift of the Thailand's technological focus and standard; from automotive producers to be aerospace and aviation industry MRI (Maintenance, Repair & Overhaul) hub and parts producers. Thus Prolific Group has advanced itself in partnering with multiple suppliers that qualified for aerospace and aviation industry. Prolific Group has start to gain acknowledgement in Thailand as supplier to the Aerospace and aviation industry through the products of:



C/C Composites "Neftec"



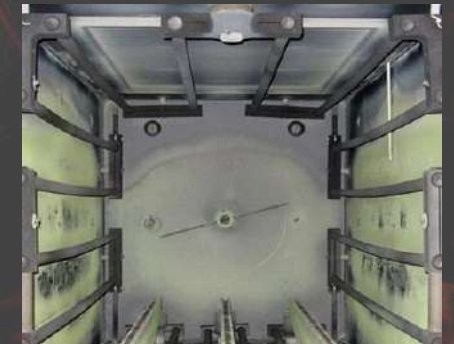
IPSEN



PHI Radiant Heater



PHI Basket & Tray



PHI Carbon Heater & Graphite Insulation

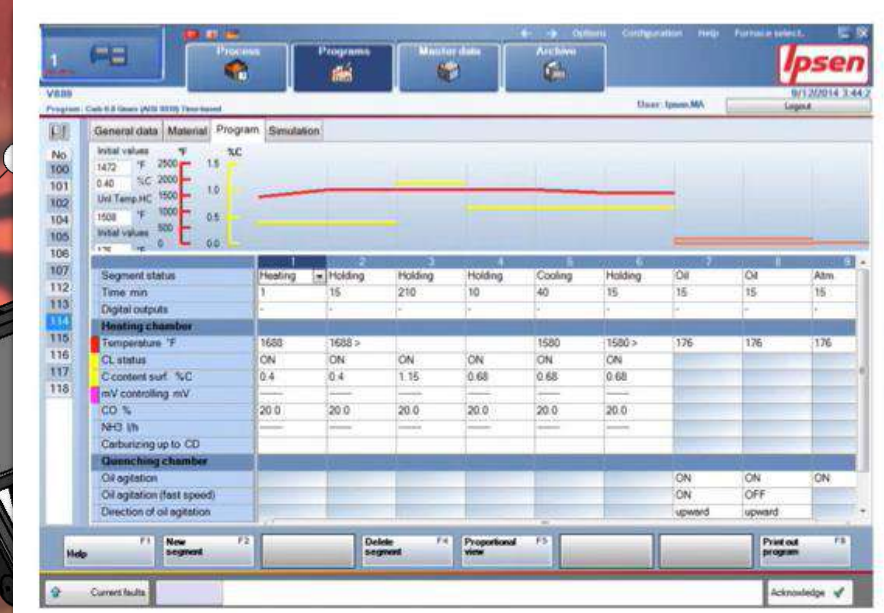
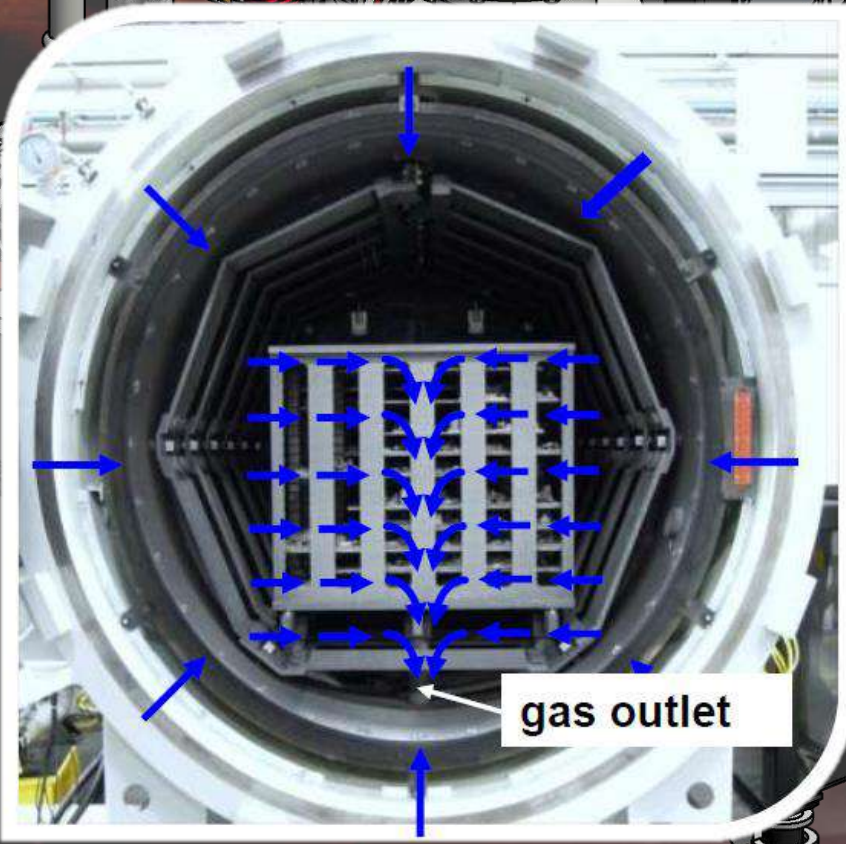


# Retrofit

## Prothermal Solutions Business: PSB

Business solution focuses on improvement of **Productivity** and **Efficiency** or **Thermal requirements**.

Slogan **“Maximize your Profitability through PSB”**





**Nabertherm**

MORE THAN HEAT 30-3000 °C

In completing the furnace product line, Prolific Group has been cooperating with Nabertherm for supplying wide ranges of Nabertherm furnace, and act as the turnkey supplier, with capability of supporting installation, commissioning & after sales service; which includes the supply of spare parts of the furnaces.

Nabertherm with have been developing and producing industrial furnaces for many different applications for 70 years. As manufacturer, Nabertherm offers the widest and deepest range of furnaces worldwide.

Nabertherm's competitive advantages are:

- Made in Germany
- Setting Standards in Quality and Reliability
- Global Sales & Service Network – Close to Customer
- Large customer test center
- Customer Service & Spare parts
- Experience in many fields of Thermal Processing

# Main Target Market



Aerospace & Engine Parts

MRO & Aerospace Industry



Thermal Process Technology

In House/Commercial Heat Treatment Industry



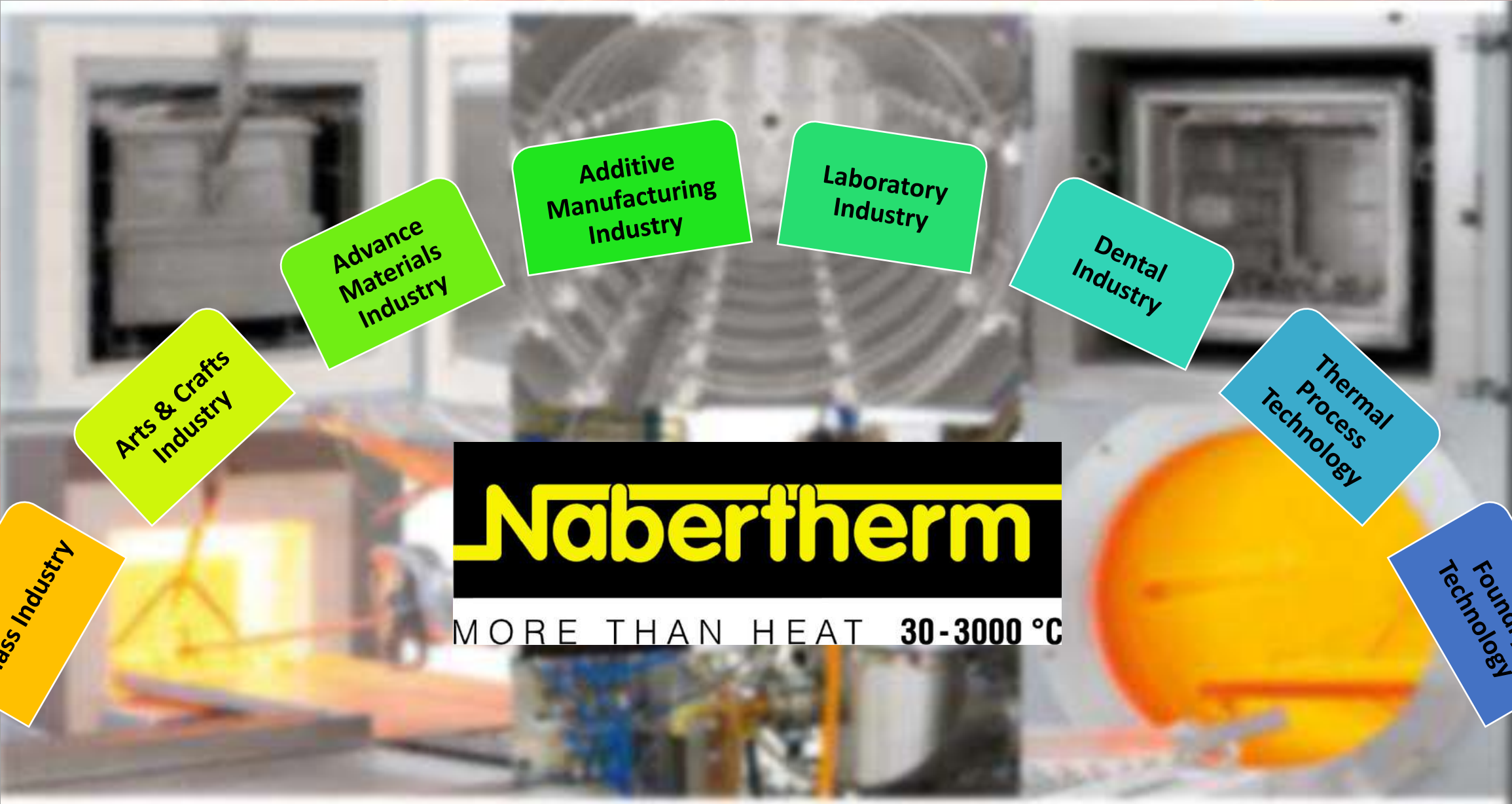
Laboratory

Science & Technology Industry

Other Applicable Industries are:

- Jewelry Industry
- Medical Industry
- Ceramic Industry

# Industrial Category



**Nabertherm**

MORE THAN HEAT 30-3000 °C

Glass Industry

Arts & Crafts Industry

Advance Materials Industry

Additive Manufacturing Industry

Laboratory Industry

Dental Industry

Thermal Process Technology

Foundry Technology

# Glass Industry Process Application

Annealing

Hardening

Tempering

Bending

Slumping

Welding

Laminating

Fusing

Melting of Glass

Photovoltaics

Quartz Glass Technology

Fiber Optics

Heat Soak

Laboratory



Forced convection bogie hearth furnace  
W 19152/20AS for tempering of semi-finished borosilicate glass products



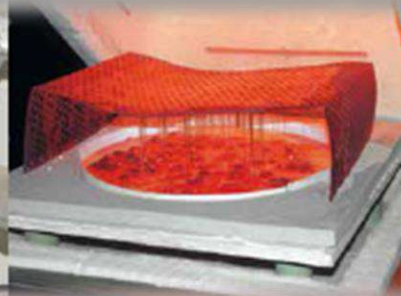
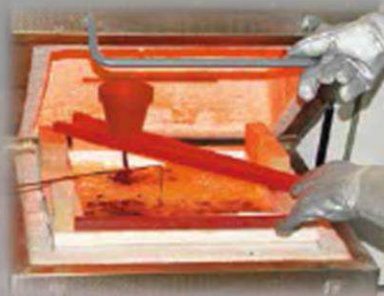
Forced convection chamber furnace N 4010/45 HA



Oven TR 240



Forced convection furnace N 4010/45 HA



# Arts & Crafts Industrial Application

Pottery

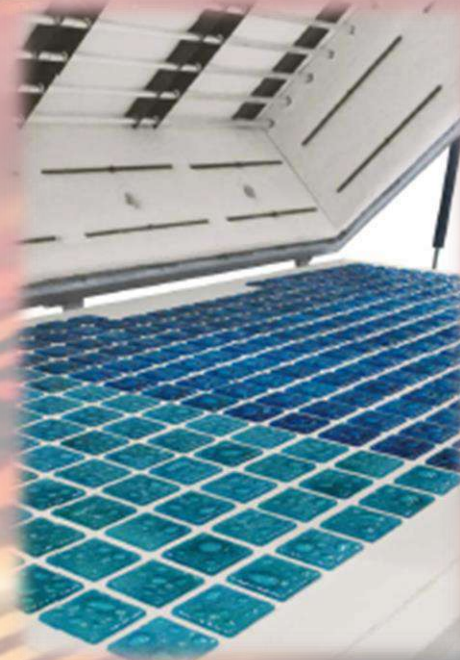
Porcelain  
Painting

Glass  
Painting

Fusing

Decorating

Raku



# Industrial Application for Advanced Material Industry

Powder Metallurgy

Technical Ceramics

Bio Ceramics

Additive Manufacturing

3D-Printing

MLCC, LTCC, HTCC

MIM, CIM

Lamps/Illuminants/LED

Fuel Cell/Battery  
Manufacturing

Photovoltaics

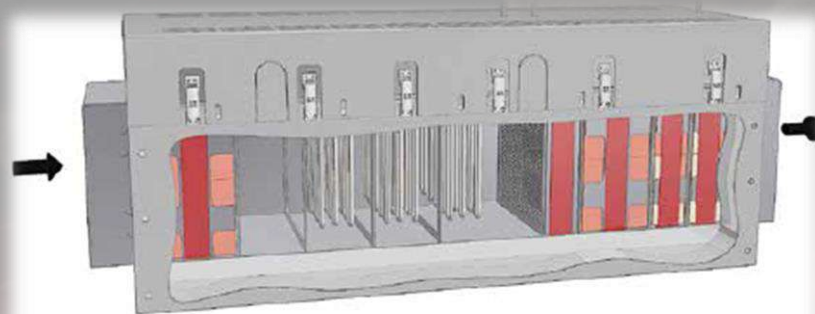
Crystal Growth

Polymerization

Energy Efficiency Technology



KTR 3100 DT with rotating system for tempering of silicone parts. Four baskets will be charged in the frame and can be taken out separately



Scheme of a catalytic afterburning system



Hot-wall retort furnace NRA 1700/06 with charging frame for installation in grey room with charging door in clean room



# Furnaces for Additive Manufacturing Processing Industry

Retort Furnaces

Chamber Furnaces

Forced Convection  
Furnaces

Annealing Furnaces

Protective Gas Boxes

Furnaces for De-  
binding

Sintering Furnaces

High Temperature  
Furnaces

Ovens

Chamber Ovens



Semi-automatic annealing plant with retort furnace NR 5Q/11 and water quenching bath on rails



Retort furnace NRA 40/02 with cupboard for the acid pump



Cold-wall retort furnace VHT 100/12-MO for processes in high vacuum

# Furnaces & Accessories for Dental Industry

Sintering  
Furnaces for:

Laser  
Sintering

Burnout  
Furnaces

Model  
Casting

Production  
Furnaces

Translucent  
Zirconia

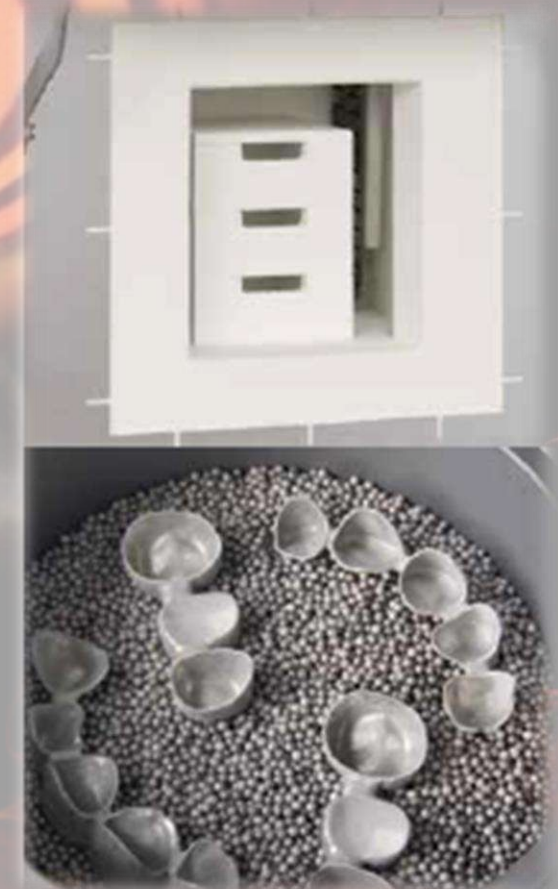
Zirconia

CoCr Alloys

CAD/CAM  
Systems



LHT 0V17 D



# Furnaces for Thermal Process Technology

- Annealing Furnaces
- Hardening Furnaces
- Tempering Furnaces
- Forming Furnaces
- Preheating Furnaces
- Forging Furnaces
- Heat Cleaning Furnaces
- Vacuum Technology
- Pyrolysis
- Brazing Furnaces
- De-binding Furnaces
- Sintering Furnaces
- Retort Furnaces
- Continuous & Wire Annealing Furnaces
- Tube Furnaces
- Salt-bath Furnaces
- Nitriding and Carburizing Furnaces
- Hardening Systems
- Quenching Baths



Retort furnace SN11 Q/24-W with long-time heating



Retort furnace V11 Q/16-MO with automatic package



# Furnaces for Foundry

Melting Furnace

Holding Furnace

Core Drying  
Furnace

Thermal Decoring  
Furnace

Dewaxing Furnace

Quenching  
Furnace



Tilting furnace KBR 240/11



Melting furnace KC 2415



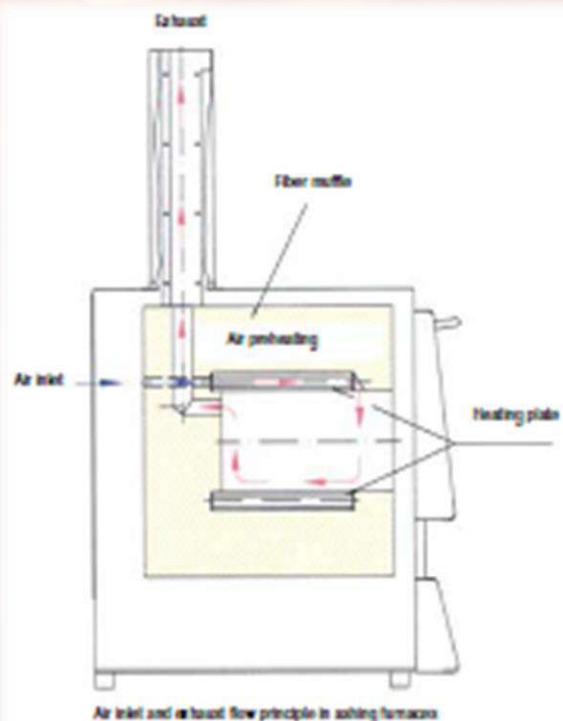
Tilting furnace K 150/12 and bale-out furnace T 180/11 as premelting and holding system



Bale-out furnace T 800/11

# Furnaces for Laboratory Furnace

- Muffle Furnaces
- Preheating Furnaces
- Ashing Furnaces
- Tube Furnaces
- Ovens
- Forces Convection Furnaces
- Chamber Furnace s
- Melting Furnaces
- High-Temperature Furnaces
- Retort Furnaces
- Vacuum Furnaces
- Annealing Furnaces
- Clean Room Furnaces



Chamber furnace LH 21G 125W with scale to measure weight reduction during annealing



Weighing furnace L 8/11/2W

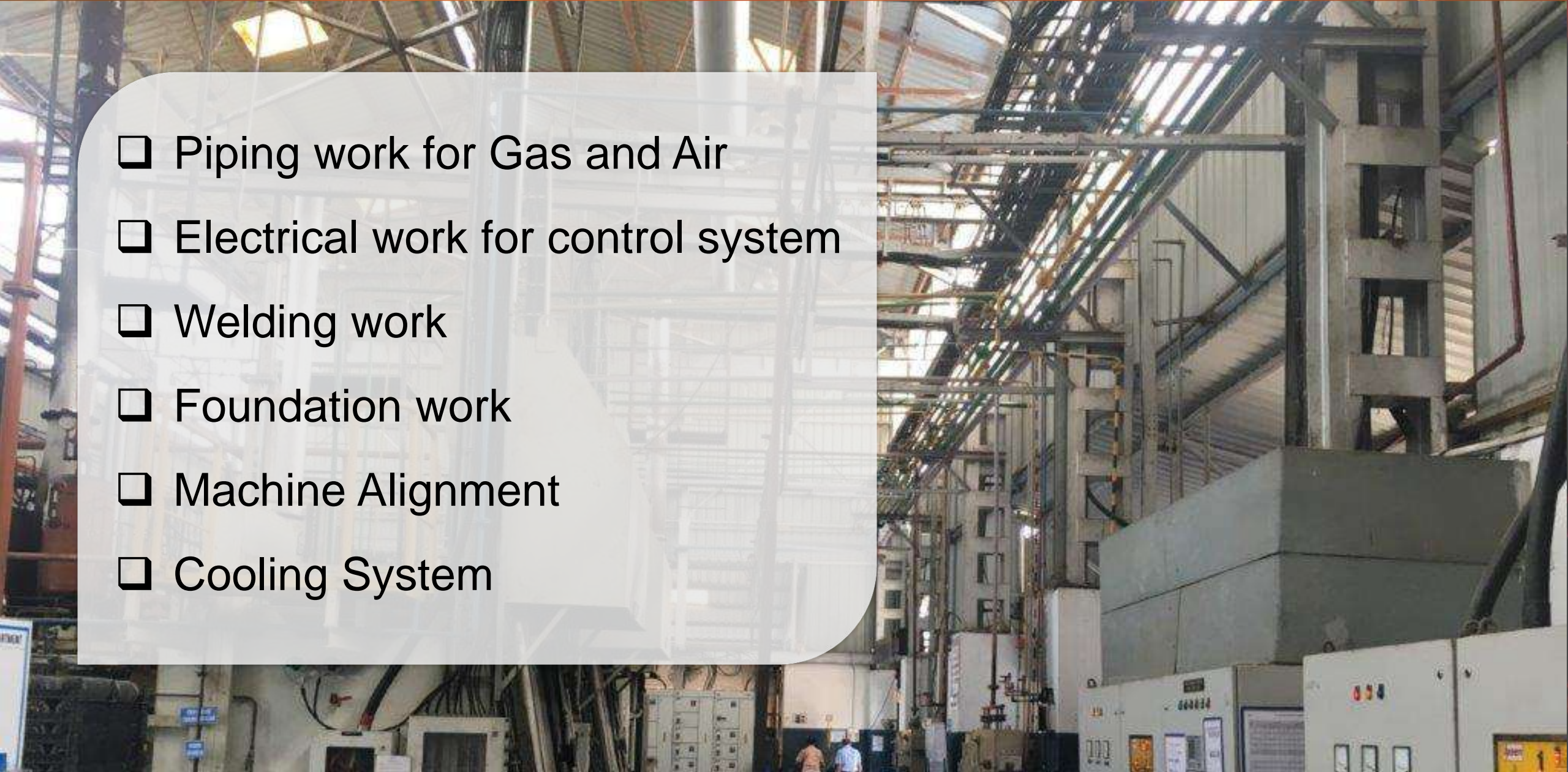


Assay furnace N 25/10/23P



LH 16/11/10

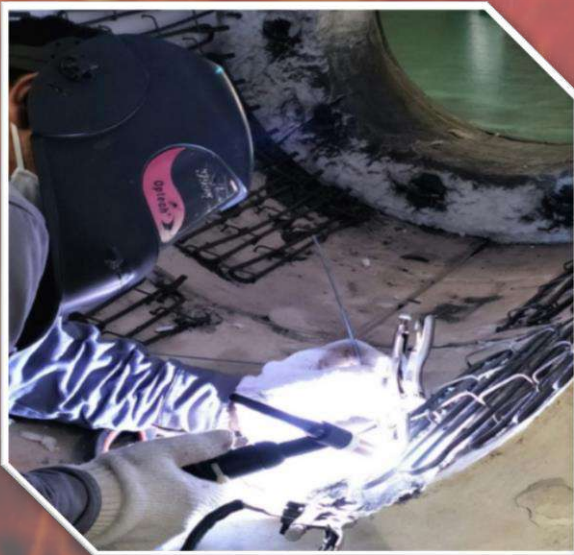
- Piping work for Gas and Air
- Electrical work for control system
- Welding work
- Foundation work
- Machine Alignment
- Cooling System



# Other Services



# Other Services





# Other Services



077017

# Other Services



# Equipment and Tooling

The solutions to your everyday equipment maintenance problem.

PES Offers a variety of Heat Treatment Processes – Serving the needs of customers in Thailand as well as overseas with the complete equipment and tooling.

Despite our sizes, PES has maintained a “small business” attitude, by providing personal attention from our knowledgeable sales staff, highly skilled metallurgical, and caring customer service group.



# Equipment and Tooling



**Temperature Uniformity Survey Recorder**



**Thermoscan Infrared Camera**



**Flue Gas Analysis**



**Laser Level Measuring**



**Insulation Tester / Mega-Ohm Meter**



**Milliohm Meter**



**Pipe Threading Machine**



**Argon Welding Machine**



**Arc Welding Machine**



**Lathe Machine**



**Milling Machine**



**Plasma Cutter**

# On-Site Safety



**General Work**



**Welding Work**

# On-Site Form Requirements

 **Prolific Engineering & Service** 

บริษัท โพรลิดิก เอ็นจิเนียริ่ง แอนด์ เซอร์วิส จำกัด  
11/11 หมู่ 11 ตำบล ราชاتهเวะ อำเภอ บางพลี จังหวัด สมุทรปราการ 10540 Tel. 0-

**JOB NAME :**  
ชื่อโครงการ

**CUSTOMER NAME :**  
ชื่อลูกค้า

**RESPONSIBLE Person :** \_\_\_\_\_ **Phone no. :** \_\_\_\_\_  
ผู้รับผิดชอบพื้นที่ เบอร์

**Start Date :** \_\_\_\_\_ **Finish Date :** \_\_\_\_\_  
วันที่เริ่มงาน วันส่งมอบ

**MANDATORY PERSONAL PROTECTIVE EQUIPMENT**  
เขตบังคับสวมใส่อุปกรณ์ป้องกันอันตรายส่วนบุคคล

 **ปลอดภัยไว้ก่อน**  
**SAFETY FIRST**

Project Billboard

 Prolific Engineering & Service Co., Ltd. 

บริษัท โพรลิดิก เอ็นจิเนียริ่ง แอนด์ เซอร์วิส จำกัด  
11/11 หมู่ 11 ตำบล ราชاتهเวะ อำเภอ บางพลี จังหวัด สมุทรปราการ 10540 Tel. 0-2170-8171-2

**JOB NAME :** PES SERVICE FEE FOR CLEANING BURNER 72 SET

**CUSTOMER NAME :** POSCO THAINOX, KHUNJADED 081-949-0171

**RESPONSIBLE Person :** MR. SARAWUT MAPRASOP (ENGINEER) 089-7662018  
MR. JUMPOL KHANTONG (ENGINEER) 061-4351511

**Start Date :** 26/03/2018 **Finish Date :** 04/04/2018

**MANDATORY PERSONAL PROTECTIVE EQUIPMENT ZONE I**

Job Name

Customer Name

Project Leader

Emergency Contact


Start / Finish Date

Safety Equipment

# Certificates

## Certificate


Standard **ISO 9001:2015**  
 Certificate Registr. No. **01 100 1432776**

Certificate Holder:  
  
**Prolific Heating International Co., Ltd.**  
 11/11 Moo 11, Rachathava, Bangplee, Samutprakam 10540 Thailand




Scope:  
 Sales of Heaters, Furnaces and Related Parts (e.g. Wires, Insulators, Ceramic Parts including Spare Parts and Other Supporting Parts)  
 Design and Manufacturing of Heaters

Proof has been furnished by means of an audit that the requirements of ISO 9001:2015 are met.

Validity:  
 The certificate is valid from 2018-02-13 until 2021-02-12.  
 First certification 2015

  
 TÜV Rheinland Cert GmbH  
 Am Grauen Stein - 51105 Köln

2018-01-05

www.tuv.com   

 บริษัท โพรลฟิค ฮีตติ้ง อินเตอร์เนชั่นแนล จำกัด  
 บริษัท โพรลฟิค เบริงเจอร์ ออนด์ เซอร์วิส จำกัด

ร่วมกับ  
 บริษัท ไดรคชั่น ทรนนิ่ง จำกัด  
 บริษัท ฝึกอบรมวิชาชีพวิศวกรรม

**นายจุมพล ชันทอง**  
 ผ่านการฝึกอบรมหลักสูตร ความปลอดภัยในการทำงานในอับอากาศ  
 สำหรับผู้ปฏิบัติงาน ผู้ควบคุม ผู้ปฏิบัติงาน และผู้ช่วยเหลือ

อบรมภาคทฤษฎีและปฏิบัติในระยะเวลา ๑๖ ชั่วโมง  
 ปลอดภัยในการทำงานในอับอากาศ พ.ศ. 2560  
 ระหว่างวันที่ 7-8 กรกฎาคม พ.ศ. 2560  
 รวมเวลาในการฝึกอบรม 16 ชั่วโมง

  
 นายจุมพล ชันทอง / ผู้จัดการโรงงาน

๒๕๖๐.๑.  
 (นายจุมพล ชันทอง)  
 (นายจุมพล ชันทอง)  
 (นายจุมพล ชันทอง)  
 ฝึกอบรมที่ ๓๔ / ๒๕๖๐.๑.๐๑  
 ฝึกอบรมที่ ๓๔ / ๒๕๖๐.๑.๐๑

๒๕๖๐.๑.  
 (นายจุมพล ชันทอง)  
 (นายจุมพล ชันทอง)  
 (นายจุมพล ชันทอง)  
 ฝึกอบรมที่ ๓๔ / ๒๕๖๐.๑.๐๑  
 ฝึกอบรมที่ ๓๔ / ๒๕๖๐.๑.๐๑

๒๕๖๐.๑.  
 (นายจุมพล ชันทอง)  
 (นายจุมพล ชันทอง)  
 (นายจุมพล ชันทอง)  
 ฝึกอบรมที่ ๓๔ / ๒๕๖๐.๑.๐๑  
 ฝึกอบรมที่ ๓๔ / ๒๕๖๐.๑.๐๑


## Confined Spaces




ขอมอบวุฒิบัตรนี้ไว้เพื่อแสดงว่า  
**นายจุมพล ชันทอง**  
 ได้ผ่านการฝึกอบรมหลักสูตร  
**"ความปลอดภัยในการทำงานเกี่ยวกับไฟฟ้าสำหรับลูกจ้างซึ่งปฏิบัติงานเกี่ยวกับไฟฟ้า"**  
 อบรมวันที่ 18 มิถุนายน พุทธศักราช 2559 ระยะเวลาการฝึกอบรม 6 ชั่วโมง

  
 (นายจุมพล ชันทอง)  
 วิชาช่างผู้สอน

## Electrical

  
**สำนักงานสวัสดิการและคุ้มครองแรงงานจังหวัดสมุทรสาคร**  
 ขอรับรองว่า  
**นายจุมพล ชันทอง**  
 ผ่านการฝึกอบรมหลักสูตรเจ้าหน้าที่ความปลอดภัยในการทำงาน ระดับบริหาร  
 ตามกระทรวงมหาดไทย ในสาขาวิชาความรู้และการจัดการด้านความปลอดภัย  
 อาชีวอนามัย และสภาพแวดล้อมในการทำงาน พ.ศ. ๒๕๕๘  
 ระหว่างวันที่ ๑๕ - ๑๖ กุมภาพันธ์ พ.ศ. ๒๕๕๘

ระยะเวลาการฝึกอบรม ๑๒ ชั่วโมง  
 ในวันที่ ๑๖ กุมภาพันธ์ พ.ศ. ๒๕๕๘

  
 (นายจุมพล ชันทอง)  
 ผู้จัดการและคุ้มครองแรงงานจังหวัดสมุทรสาคร

นายจุมพล ชันทอง

## Safety Officer

  
**คณะกรรมการส่งเสริมการพัฒนาฝีมือแรงงาน**  
 หนังสือรับรองฉบับนี้ไว้เพื่อแสดงว่า  
**นายจุมพล ชันทอง**  
 ได้ผ่านการทดสอบมาตรฐานฝีมือแรงงานแห่งชาติ

สาขาอาชีพ ช่างเชื่อมเหล็ก (ช่างเชื่อมเหล็ก) ระดับ ๑  
 ทดสอบโดย สถาบันพัฒนาฝีมือแรงงาน ๑ สมุทรปราการ เมื่อวันที่ ๑๕ พฤศจิกายน ๒๕๕๘

ในวันที่ ๑๖ วันที่ ๒ ธันวาคม ๒๕๕๘

  
 (นายจุมพล ชันทอง)  
 ผู้ดำเนินการสอบปฏิบัติและทฤษฎี  
 วิชาช่างเชื่อมเหล็ก

  
 (นายจุมพล ชันทอง)  
 ผู้ดำเนินการทดสอบ

## Welding

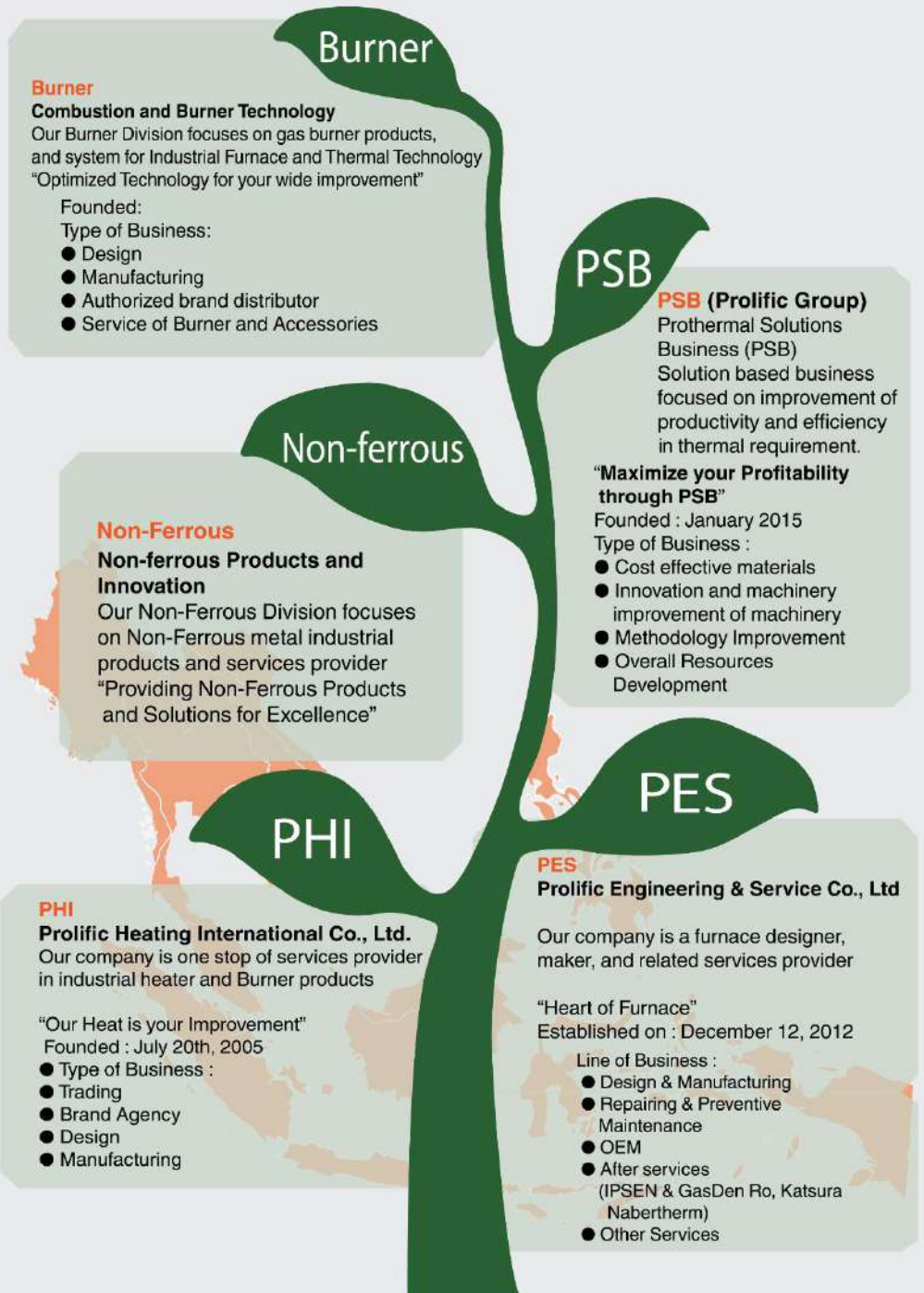
**Quality Performance**

**Expertise**

**Professionalism**







## Burner

### Burner

#### Combustion and Burner Technology

Our Burner Division focuses on gas burner products, and system for Industrial Furnace and Thermal Technology  
 "Optimized Technology for your wide improvement"

Founded:

Type of Business:

- Design
- Manufacturing
- Authorized brand distributor
- Service of Burner and Accessories

## PSB

### PSB (Prolific Group)

Prothermal Solutions Business (PSB)  
 Solution based business focused on improvement of productivity and efficiency in thermal requirement.

**"Maximize your Profitability through PSB"**

Founded : January 2015

Type of Business :

- Cost effective materials
- Innovation and machinery improvement of machinery
- Methodology Improvement
- Overall Resources Development

## Non-ferrous

### Non-Ferrous

#### Non-ferrous Products and Innovation

Our Non-Ferrous Division focuses on Non-Ferrous metal industrial products and services provider  
 "Providing Non-Ferrous Products and Solutions for Excellence"

## PES

### PES

#### Prolific Engineering & Service Co., Ltd

Our company is a furnace designer, maker, and related services provider

**"Heart of Furnace"**

Established on : December 12, 2012

Line of Business :

- Design & Manufacturing
- Repairing & Preventive Maintenance
- OEM
- After services (IPSEN & GasDen Ro, Katsura Nabertherm)
- Other Services

## PHI

### PHI

#### Prolific Heating International Co., Ltd.

Our company is one stop of services provider in industrial heater and Burner products

**"Our Heat is your Improvement"**

Founded : July 20th, 2005

Type of Business :

- Trading
- Brand Agency
- Design
- Manufacturing



**Prolific Engineering & Services Co., Ltd. (PES)**  
11/11 Moo 11 Soi Kingkaew 37, Kingkaew Rd.,  
Rachathava, Bangplee, Samutprakarn 10540, Thailand.  
Tel: (662) 170-8171 (Auto 6 Lines)



SCAN ME

[www.phiheating.com](http://www.phiheating.com)



Management System  
ISO 9001:2015

[www.tuv.com](http://www.tuv.com)  
ID 9105080820

